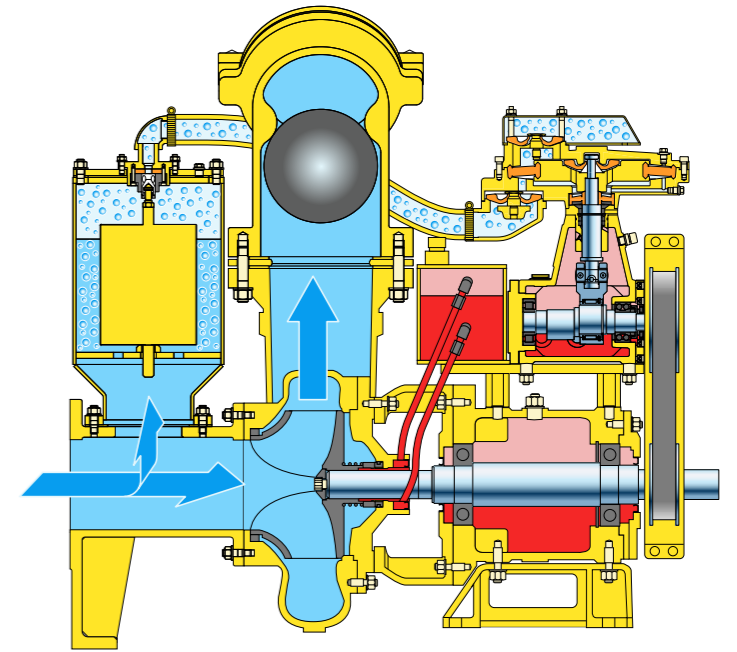




## Cycloseal® and run-dry

The patented Cycloseal® design has unique deflector vanes that work with the impeller backvanes to create a cyclo-action. This action removes solids and abrasive materials from the seal area while purging air and gas pockets, thus extending the seal's life and eliminating any need for venting or water flushing. All of the pumps in the BA series are designed to run dry for longer periods. The mechanical seal is cooled by an external oil circulation system.

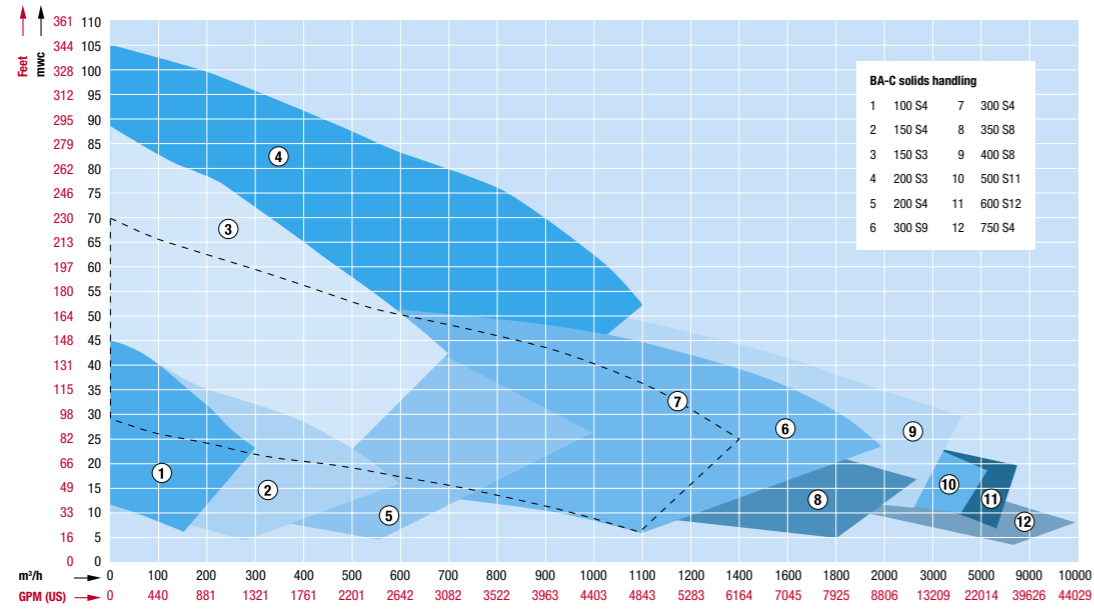


## BA-C models

The BA-C range, which consists of solids handling pumps and clear liquid pumps, fully meets to our philosophy of producing "pumps for results." The products in this range combine a highly efficient pump casing with a reliable and robust construction—elements that guarantee excellent performance with low energy consumption and maintenance costs.



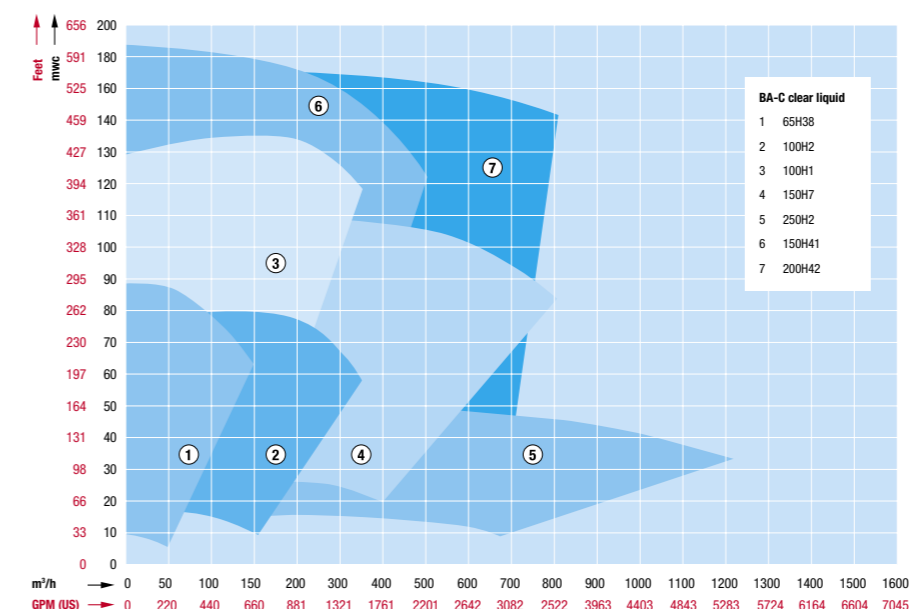
# BA-C solids handling



The BA-C series' solids handling pumps combine large free passages up to 259 mm with high pressures up to 10 bars.



# BA-C clear liquid pumps



The BA-C series provides a wide range of clear liquid pumps for pressures up to 18 bars.



## BA-C series solids handling

Type	RPM	Connection mm	Solids handling mm	Q max m³/h	Q max GPM (US)	H max mwc	H max Feet	Air m³/h	Power kW	Install. Power kW	Dimensions mm
100 S4 D256 DE GL	1800	150 / 100	76	290	1277	35	115	50	18,5	23,6	2500 x 1210 x 1960
150 S4 D241 DE GL	1800	200 / 150	76	500	2202	26	85	50	21,3	23,6	2500 x 1210 x 1960
150 S3 D305 HA GL	1800	200 / 150	76	560	2466	48	157	50	35,2	37	2500 x 1210 x 1960
150 S3 D356 DE GL	1800	200 / 150	76	620	2730	68	223	50	73	77	3300 x 1210 x 1960
200 S4 D279 HA GL	1800	250 / 200	85	760	3346	38	125	50	33	37	3300 x 1210 x 1960
200 S4 D305 DE GL	1800	250 / 200	85	850	3743	49	161	50	57	64	3300 x 1210 x 1960
200 S3 D305 HA GL	1500	250 / 200	85	700	3082	30	98	50	22	37	3300 x 1210 x 1960
200 S3 D356 DE GL	1800	250 / 200	85	1000	4403	61	200	50	86	106	4000 x 1210 x 1960
300 S9 D327 DE GL	1500	300 / 300	76	1700	7485	32	105	100	94	106	4000 x 1210 x 1960
300 S9 D356 DE GL	1800	300 / 300	76	2200	9687	55	180	100	183	234	5000 x 1500 x 2510
300 S4 D356 VO GL	1800	300 / 300	101	1300	5724	58	190	100	110	122	4000 x 1210 x 1960
350 S8 D445 VO GL	1000/1800	350 / 300	101	2200	9687	28	92	100	92	122	4500 x 1500 x 2510
400 S8 D559 VO GL	1000/1800	350 / 350	114	3200	14090	49	161	100	221	234	5000 x 1500 x 2510
500 S11 D711 VO GL	750/1800	600 / 500	127	5500	24217	39	128	100	320	400	6060 x 2450 x 2600
600 S12 D660 VO GL	735/1800	600 / 600	133	6500	28620	32	105	100	368	400	6060 x 2450 x 2600
750 S4 D868 VO GL	585/1800	750 / 750	259	9000	39627	29	95	100	330	400	6060 x 2450 x 2600

The above-mentioned types and data are the same for open diesel sets. The BA-C series of solids handling pumps is also available with electric drive.

## BA-C series clear liquid

Type	RPM	Connection mm	Solids handling mm	Q max m³/h	Q max GPM	H max mwc	H max Feet	Air m³/h	Power kW	Install. Power kW	Dimensions mm
65 H38 D232 HA GL	1800	100 / 60	12	85	374	26	85	50	5,5	5,5	2500 x 1210 x 1960
65 H38 D254 HA GL	3000	100 / 60	12	160	704	88	289	50	35	47	2500 x 1210 x 1960
100 H2 D324 HA GL	1800	150 / 100	21	310	1365	54	177	50	34	37	2500 x 1210 x 1960
100 H1 D305 HA GL	1800	150 / 100	15	240	1057	48	157	50	35	37	2500 x 1210 x 1960
100 H1 D418 DE GL	1800	150 / 100	15	320	1409	97	318	50	100	106	4000 x 1210 x 1960
150 H41 D406 VO GL	1800	200 / 100	35	380	1673	88	289	50	106	122	4000 x 1210 x 1960
150 H41 D457 VO GL	1800	200 / 100	35	420	1849	118	387	50	155	176	4500 x 1500 x 2510
150 H41 D508 VO GL	1800	200 / 100	35	480	2113	150	492	50	225	234	5000 x 1500 x 2510
150 H7 D406 DE GL	1800	250 / 150	31	800	3522	83	272	50	147	154	4000 x 1210 x 1960
150 H7 D418 VO GL	1800	250 / 150	31	800	3522	87	285	50	165	234	5000 x 1210 x 2510
200 H42 D381 VO GL	1800	250 / 150	50	700	3082	78	256	50	136	176	4500 x 1500 x 2510
200 H42 D432 VO GL	1800	250 / 150	50	800	3522	102	335	50	206	234	5000 x 1500 x 2510
200 H42 D553 VO GL	1800	250 / 150	50	800	3522	160	525	50	367	400	6060 x 2450 x 2600
250 H2 D330 DE GL	1800	300 / 250	31	1200	5283	50	164	50	104	106	4000 x 1210 x 1960
250 H2 D343 VO GL	1800	300 / 250	31	1200	5284	54	177	50	120	122	4000 x 1210 x 1960

The above-mentioned types and data are the same for open diesel sets. The BA-C series of clear liquid pumps is also available with electric drive.

**BBA Pumps BV**

Edisonstraat 12  
Postbus 498  
7000 AL Doetinchem  
The Netherlands

T +31 (0)314-368 436  
F +31 (0)314-378 403  
E [info@bbapumps.com](mailto:info@bbapumps.com)  
I [www.bbapumps.com](http://www.bbapumps.com)

