

BBA self-priming centrifugal pumps



Type: B 40 BVGMC
1½" cast iron monobloc

General:

The BBA self-priming centrifugal pump B 40 (1½") is a robust centrifugal pump with flow capacity up to 21 m³/h, total head up to 15 m and solid handling of 18 mm.

The construction with open impeller, changeable wear plate and large cleaning covers enables to pump clean or polluted liquids. The pump in cast iron, bronze or stainless steel is used in a wide range of markets.



Applications:

Marine, industry, construction, irrigation, waste water, agriculture and horticulture.

Technical specification:

Pump:

model : **B 40 BVGMC**
max. flow : 21 m³/h
max. head : 15 m
impeller size : 109 mm
free passage : 18 mm
pump speed : 2900 rpm
connections : 1½" BSP

Materials:

pump casing : cast iron GG 20 – 0.6020
head : cast iron GG 20 – 0.6020
wear plate : cast iron GG 20 – 0.6020
impeller : cast iron GG 25 – 0.6025

Electric drive:

motor power : 1.1 kW – 2 pole
voltage : 3 ph 230/400 Volt
motor execution : B3/B14A, IP 55, ISO F
assembly : monobloc
weight : 26 kg

shaft seal : mechanical seal
seal faces : sic / sic / viton
pump shaft : steel C45 – 1.1191
fixing material : steel 8.8 el. galvanised
gaskets : NBR / Paper

Options B- series:

Mechanical seals:

MG1 seal : sic/sic/EPDM
TW seal : graphite /ceramic/nitril
graphite /ceramic/nitril
t. carbide/t. carbide/viton

Gaskets:

NBR (Perbunan)
Viton (FPM)
EPDM
Teflon (PTFE)



Extras:

+F Din Flanges
+FK Din Flanges s.s.316
+BI impeller: bronze; shaft: s.s. 316
+BII impeller-wear plate: bronze; shaft: s.s. 316
+KI impeller-shaft: s.s. 316
+KII impeller-wear plate-shaft: s.s. 316
+M extra cutting knife
+P perma grease cartridge
+VP grease glass
+T trolley
60 Hz motor 440 V – 60 Hz

BBA Pumps BV
Edisonstraat 12, 7006 RD
P.O. Box 498, 7000 AL
Doetinchem

Pumps for results
Tel. (+31) 314 36 84 36
Fax. (+31) 314 37 84 03

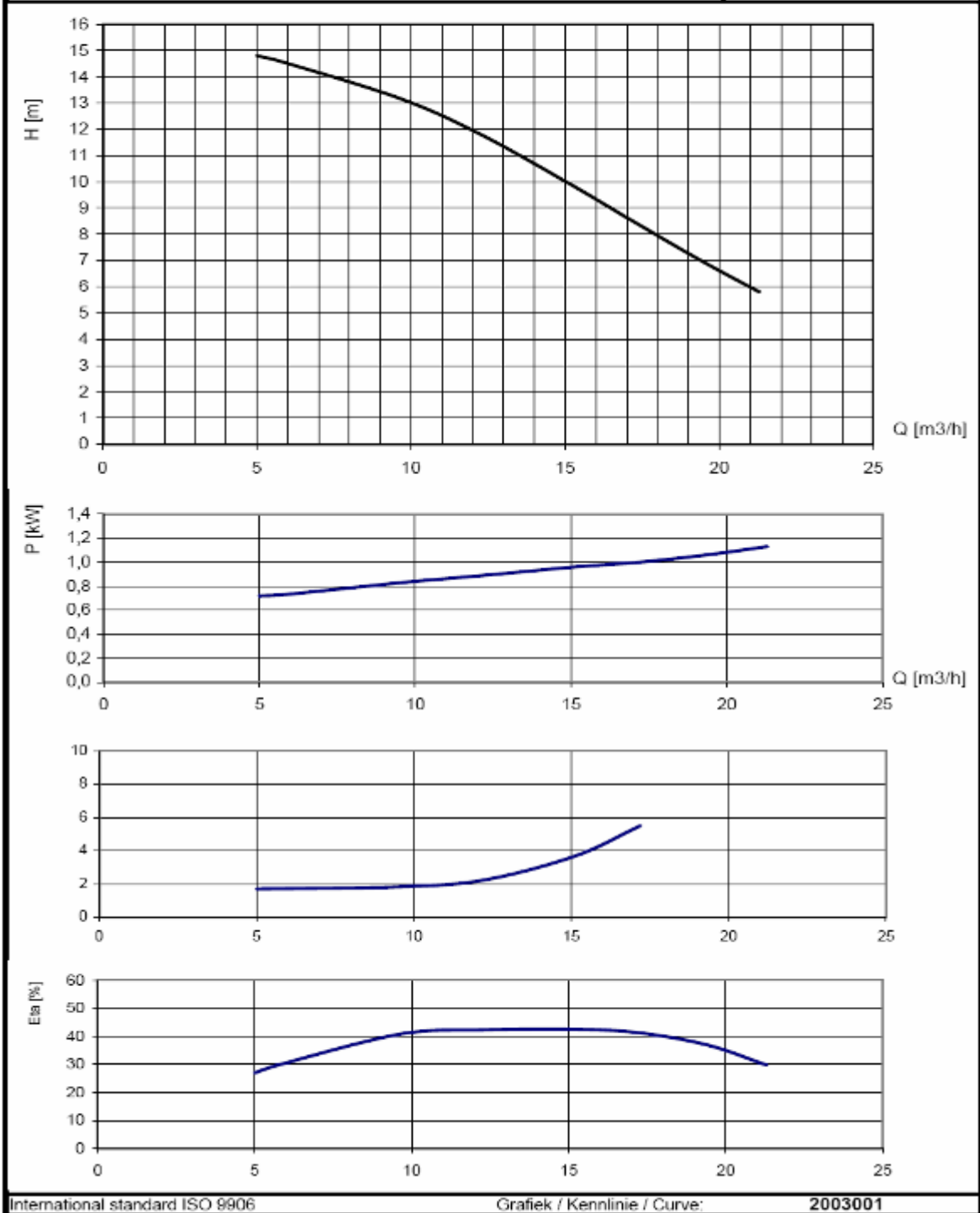
www.bbapumps.com
info@bbapumps.com

BBA self-priming centrifugal pumps

Type: **B 40 BVGMC**
 1½" cast iron monobloc

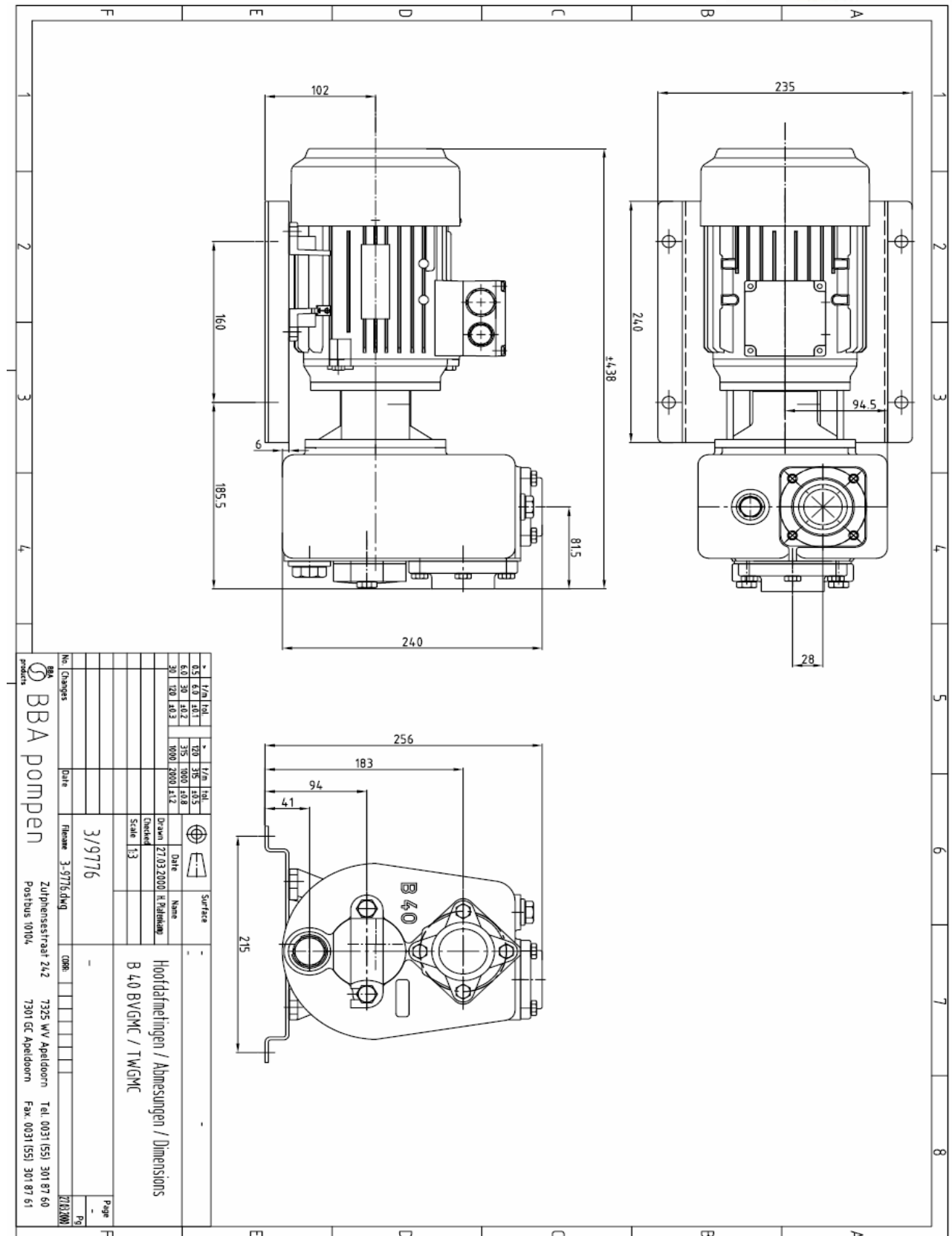


Pomptype / Pumpentyp / Pump type	: B40 G
Toerental / Drehzahl / Speed	: 2845 rpm
Waaier / Laufrad / Impeller	: "open" 109 mm
Slijtplaat / Verschleissplatte / Wear plate	:
Vrije doorlaat / Freier Durchgang / Free passage	: 18 mm
Zuig / Saug / Suction	: 1.5"
Pers / Druck / Discharge	: 1.5"



BBA self-priming centrifugal pumps

Type: B 40 BVGMC
1½" cast iron monobloc



No	Changes	Date	Revision	3/9776	088	Page
01	1/1	10/1	1/1	1/1	1/1	1/1
02	2/1	10/1	2/1	2/1	2/1	2/1
03	3/1	10/1	3/1	3/1	3/1	3/1
04	4/1	10/1	4/1	4/1	4/1	4/1
05	5/1	10/1	5/1	5/1	5/1	5/1
06	6/1	10/1	6/1	6/1	6/1	6/1
07	7/1	10/1	7/1	7/1	7/1	7/1
08	8/1	10/1	8/1	8/1	8/1	8/1
09	9/1	10/1	9/1	9/1	9/1	9/1
10	10/1	10/1	10/1	10/1	10/1	10/1

No	Changes	Date	Revision	3/9776	088	Page
01	1/1	10/1	1/1	1/1	1/1	1/1
02	2/1	10/1	2/1	2/1	2/1	2/1
03	3/1	10/1	3/1	3/1	3/1	3/1
04	4/1	10/1	4/1	4/1	4/1	4/1
05	5/1	10/1	5/1	5/1	5/1	5/1
06	6/1	10/1	6/1	6/1	6/1	6/1
07	7/1	10/1	7/1	7/1	7/1	7/1
08	8/1	10/1	8/1	8/1	8/1	8/1
09	9/1	10/1	9/1	9/1	9/1	9/1
10	10/1	10/1	10/1	10/1	10/1	10/1

No	Changes	Date	Revision	3/9776	088	Page
01	1/1	10/1	1/1	1/1	1/1	1/1
02	2/1	10/1	2/1	2/1	2/1	2/1
03	3/1	10/1	3/1	3/1	3/1	3/1
04	4/1	10/1	4/1	4/1	4/1	4/1
05	5/1	10/1	5/1	5/1	5/1	5/1
06	6/1	10/1	6/1	6/1	6/1	6/1
07	7/1	10/1	7/1	7/1	7/1	7/1
08	8/1	10/1	8/1	8/1	8/1	8/1
09	9/1	10/1	9/1	9/1	9/1	9/1
10	10/1	10/1	10/1	10/1	10/1	10/1

No	Changes	Date	Revision	3/9776	088	Page
01	1/1	10/1	1/1	1/1	1/1	1/1
02	2/1	10/1	2/1	2/1	2/1	2/1
03	3/1	10/1	3/1	3/1	3/1	3/1
04	4/1	10/1	4/1	4/1	4/1	4/1
05	5/1	10/1	5/1	5/1	5/1	5/1
06	6/1	10/1	6/1	6/1	6/1	6/1
07	7/1	10/1	7/1	7/1	7/1	7/1
08	8/1	10/1	8/1	8/1	8/1	8/1
09	9/1	10/1	9/1	9/1	9/1	9/1
10	10/1	10/1	10/1	10/1	10/1	10/1

No	Changes	Date	Revision	3/9776	088	Page
01	1/1	10/1	1/1	1/1	1/1	1/1
02	2/1	10/1	2/1	2/1	2/1	2/1
03	3/1	10/1	3/1	3/1	3/1	3/1
04	4/1	10/1	4/1	4/1	4/1	4/1
05	5/1	10/1	5/1	5/1	5/1	5/1
06	6/1	10/1	6/1	6/1	6/1	6/1
07	7/1	10/1	7/1	7/1	7/1	7/1
08	8/1	10/1	8/1	8/1	8/1	8/1
09	9/1	10/1	9/1	9/1	9/1	9/1
10	10/1	10/1	10/1	10/1	10/1	10/1