

# BBA self-priming centrifugal pumps



**Type: B 60-180 BVGMC**  
2" cast iron monobloc

## General:

The BBA self-priming centrifugal pump B 60-180 (2") is a robust centrifugal pump with flow capacity up to 45 m<sup>3</sup>/h, total head up to 35 m and solid handling of 10 mm.

The construction with open impeller, changeable wear plate and large cleaning covers enables to pump clean or polluted liquids. The pump in cast iron, bronze or stainless steel is used in a wide range of markets.



## Applications:

Marine, industry, construction, irrigation, waste water, agriculture and horticulture.

## Technical specification:

### Pump:

model	: <b>B 60-180 BVGMC</b>
max. flow	: 45 m <sup>3</sup> /h
max. head	: 35 m
impeller size	: 179 mm
free passage	: 10 mm
pump speed	: 2900 rpm
connections	: 2" BSP

### Electric drive:

motor power	: 5.5 kW – 2 pole
voltage	: 3 ph 400/660 Volt
motor execution	: IP 55, ISO F
assembly	: monobloc
weight	: 115 kg

### Materials:

pump casing	: cast iron GG 20 – 0.6020
head	: cast iron GG 20 – 0.6020
wear plate	: cast iron GG 20 – 0.6020
impeller	: cast iron GG 25 – 0.6025

shaft seal	: mechanical seal
seal faces	: sic / sic / viton
pump shaft	: steel C45 – 1.1191
fixing material	: steel 8.8 el. galvanised
gaskets	: NBR / Paper

## Options B- series:

### Mechanical seals:

MG1 seal	sic/sic/EPDM
TW seal	graphite /ceramic/nitril
	graphite /ceramic/nitril
	t. carbide/t. carbide/viton

### Gaskets:

NBR	(Perbunan)
Viton	(FPM)
EPDM	
Teflon	(PTFE)

### Extras:

+F	Din Flanges
+FK	Din Flanges s.s.316
+BI	impeller: bronze; shaft: s.s. 316
+BII	impeller-wear plate: bronze; shaft: s.s. 316
+KI	impeller-shaft: s.s. 316
+KII	impeller-wear plate-shaft: s.s. 316
+P	perma grease cartridge
+VP	grease glass
+T	trolley
60 Hz	motor 440 V – 60 Hz



**BBA Pumps BV**  
Edisonstraat 12, 7006 RD  
P.O. Box 498, 7000 AL  
Doetinchem

**Pumps for results**  
Tel. (+31) 314 36 84 36  
Fax. (+31) 314 37 84 03

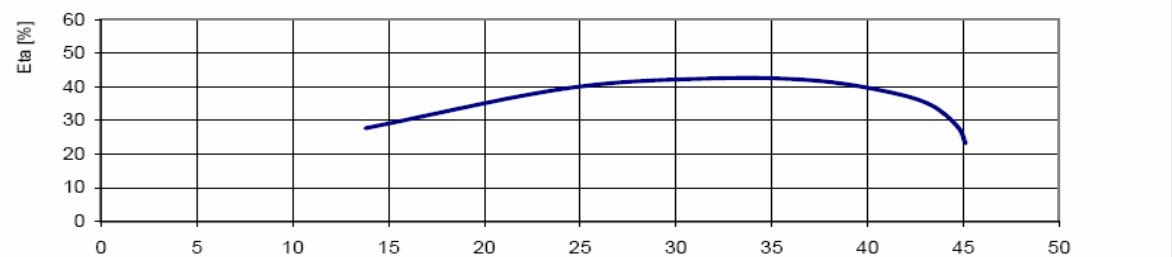
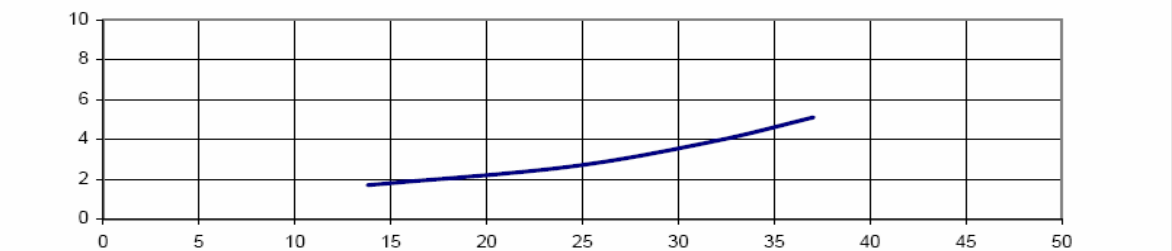
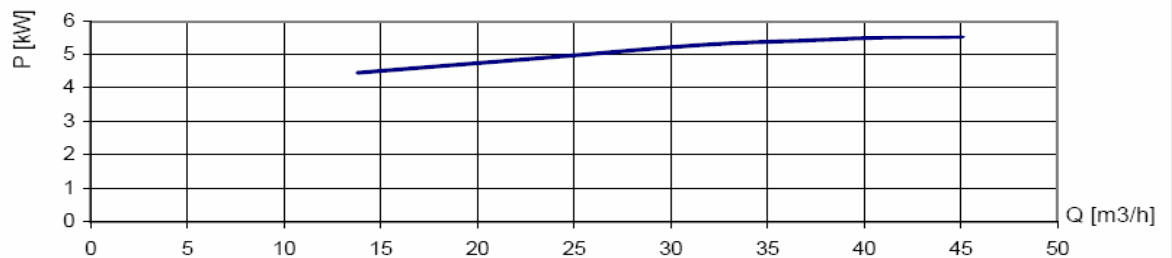
[www.bbapumps.com](http://www.bbapumps.com)  
[info@bbapumps.com](mailto:info@bbapumps.com)

# BBA self-priming centrifugal pumps

Type: **B 60-180 BVGMC**  
2" cast iron monobloc



Pomptype / Pumpentyp / Pump type	: <b>B60-180 G</b>
Toerental / Drehzahl / Speed	: <b>2895 rpm</b>
Waaier / Laufrad / Impeller	: <b>"open" 179 mm</b>
Slijtplaat / Verschleissplatte / Wear plate	:
Vrije doorlaat / Freier Durchgang / Free passage	: <b>10 mm</b>
Zuig / Saug / Suction	: <b>2"</b>
Pers / Druck / Discharge	: <b>2"</b>



International standard ISO 9906 Grafiek / Kennlinie / Curve: **2003200**

**BBA Pumps BV**  
Edisonstraat 12, 7006 RD  
P.O. Box 498, 7000 AL  
Doetinchem

**Pumps for results**  
Tel. (+31) 314 36 84 36  
Fax. (+31) 314 37 84 03

www.bbapumps.com  
info@bbapumps.com

# BBA self-priming centrifugal pumps

Type: **B 60-180 BVGMC**  
2" cast iron monobloc

