

# BBA self-priming centrifugal pumps

**Type: B 70 BVGMC**  
3" cast iron monobloc



## General:

The BBA self-priming centrifugal pump B 70 (3") is a robust centrifugal pump with flow capacity up to 88 m<sup>3</sup>/h, total head up to 20 m and solid handling of 22 mm.

The construction with open impeller, changeable wear plate and large cleaning covers enables to pump clean or polluted liquids. The pump in cast iron, bronze or stainless steel is used in a wide range of markets.

## Applications:

Marine, industry, construction, irrigation, waste water, agriculture and horticulture.

## Technical specification:

### Pump:

model	: B 70 BVGMC
max. flow	: 88 m <sup>3</sup> /h
max. head	: 20 m
impeller size	: 139 mm
free passage	: 22 mm
pump speed	: 2900 rpm
connections	: 3" BSP

### Electric drive:

motor power	: 4.0 kW – 2 pole
voltage	: 3 ph 400/660 Volt
motor execution	: B3/B14A, IP 55, ISO F
assembly	: monobloc
weight	: 102 kg

### Materials:

pump casing	: cast iron GG 20 – 0.6020
head	: cast iron GG 20 – 0.6020
wear plate	: cast iron GG 20 – 0.6020
impeller	: cast iron GG 25 – 0.6025

shaft seal	: mechanical seal
seal faces	: sic / sic / viton
pump shaft	: steel C45 – 1.1191
fixing material	: steel 8.8 el. galvanised
gaskets	: NBR / Paper

## Options B- series:

### Mechanical seals:

MG1 seal	sic/sic/EPDM
TW seal	graphite /ceramic/nitril
	graphite /ceramic/nitril
	t. carbide/t. carbide/viton

### Gaskets:

NBR	(Perbunan)
Viton	(FPM)
EPDM	
Teflon	(PTFE)



### Extras:

+F	Din Flanges
+FK	Din Flanges s.s.316
+BI	impeller: bronze; shaft: s.s. 316
+BII	impeller-wear plate: bronze; shaft: s.s. 316
+KI	impeller-shaft: s.s. 316
+KII	impeller-wear plate-shaft: s.s. 316
+M	extra cutting knife
+P	perma grease cartridge
+VP	grease glass (= including pump unit)
+T	trolley
60 Hz	motor 440 V – 60 Hz

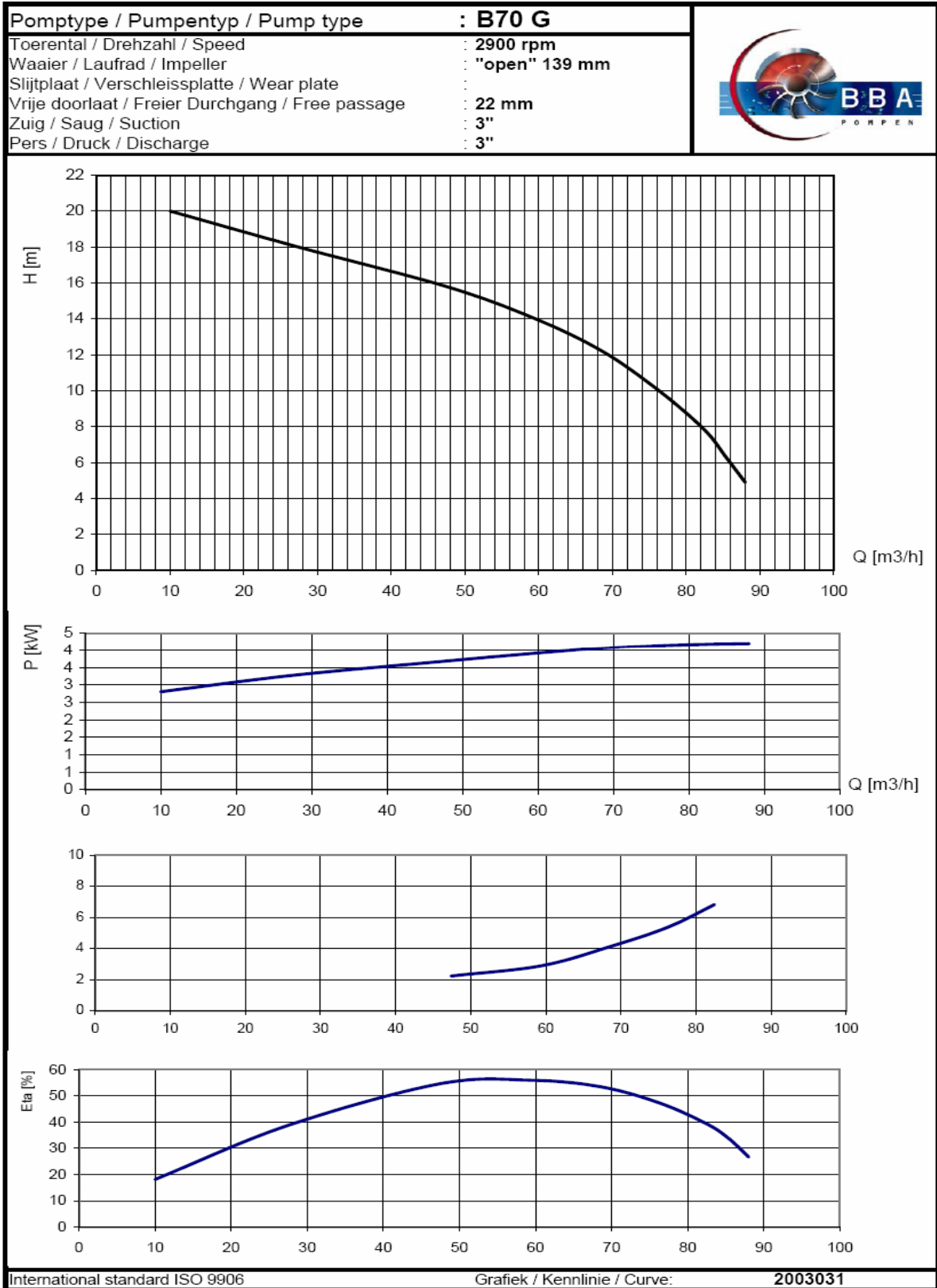
**BBA Pumps BV**  
Edisonstraat 12, 7006 RD  
P.O. Box 498, 7000 AL  
Doetinchem

**Pumps for results**  
Tel. (+31) 314 36 84 36  
Fax. (+31) 314 37 84 03

[www.bbapumps.com](http://www.bbapumps.com)  
[info@bbapumps.com](mailto:info@bbapumps.com)

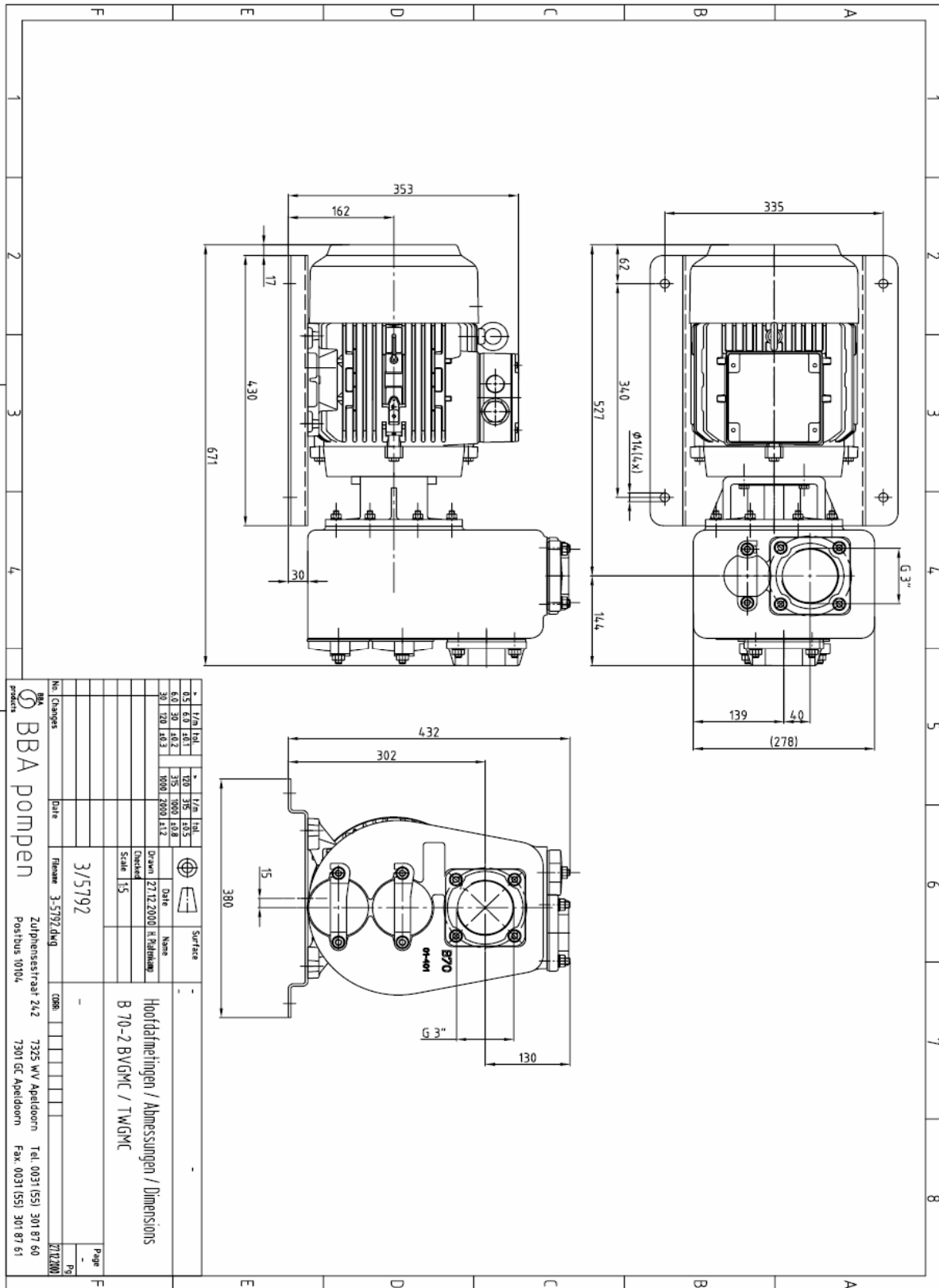
# BBA self-priming centrifugal pumps

Type: **B 70 BVGMC**  
3" cast iron monobloc



# BBA self-priming centrifugal pumps

Type: B 70 BVGMC  
3" cast iron monobloc



No. Changes	Date	File	3-5792.dwg	008	Page
1	3/5792				1

Surface	Material	Scale	Date	Name	
01	6.0	10.1	20	35	10.5
02	7.0	10.2	25	100	10.8
03	18.0	10.3	1800	1800	11.2

Scale	1:5
Checked	27.12.2000
Drawn	27.12.2000

Headfinafelingen / Admessungen / Dimensions
B 70-2 BVGMC / TWGMC