

BBA self-priming centrifugal pumps

Type: **B 85 BVGMC**

3" cast iron monobloc



General:

The BBA self-priming centrifugal pump B 85 (3") is a robust centrifugal pump with flow capacity up to 90 m³/h, total head up to 16 m and solid handling of 40 mm.

The construction with open impeller, changeable wear plate and large cleaning covers enables to pump clean or polluted liquids. The pump in cast iron, bronze or stainless steel is used in a wide range of markets.



Applications:

Marine, industry, construction, irrigation, waste water, agriculture and horticulture.

Technical specification:

Pump:

model	: B 85 BVGMC
max. flow	: 90 m ³ /h
max. head	: 16 m
impeller size	: 219 mm
free passage	: 40 mm
pump speed	: 1500 rpm
connections	: 3" BSP

Electric drive:

motor power	: 4.0 kW – 4 pole
voltage	: 3 ph 400/660 Volt
motor execution	: IP 55, ISO F
assembly	: monobloc
weight	: 132 kg

Materials:

pump casing	: cast iron GG 20 – 0.6020
head	: cast iron GG 20 – 0.6020
wear plate	: cast iron GG 20 – 0.6020
impeller	: cast iron GG 40 – 0.6040

shaft seal	: mechanical seal
seal faces	: sic / sic / viton
pump shaft	: steel C45 – 1.1191
fixing material	: steel 8.8 el. galvanised
gaskets	: NBR / Paper

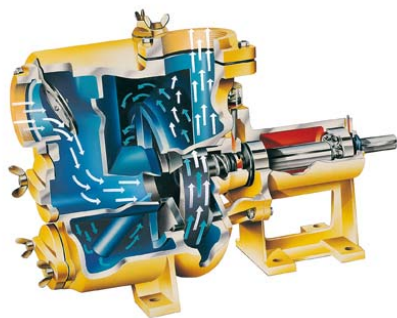
Options B- series:

Mechanical seals:

MG1 seal	sic/sic/EPDM
TW seal	graphite /ceramic/nitril
	graphite /ceramic/nitril
	t. carbide/t. carbide/viton

Gaskets:

NBR	(Perbunan)
Viton	(FPM)
EPDM	
Teflon	(PTFE)



Extras:

+F	Din Flanges
+FK	Din Flanges s.s.316
+BI	impeller: bronze; shaft: s.s. 316
+BII	impeller-wear plate: bronze; shaft: s.s. 316
+KI	impeller-shaft: s.s. 316
+KII	impeller-wear plate-shaft: s.s. 316
+P	perma grease cartridge
+VP	grease glass (= including pump unit)
+T	trolley
60 Hz	motor 440 V – 60 Hz

BBA Pumps BV

Edisonstraat 12, 7006 RD
P.O. Box 498, 7000 AL
Doetinchem

Pumps for results

Tel. (+31) 314 36 84 36
Fax. (+31) 314 37 84 03

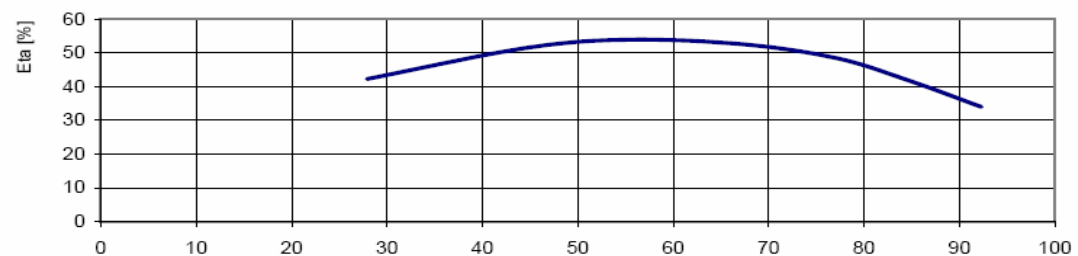
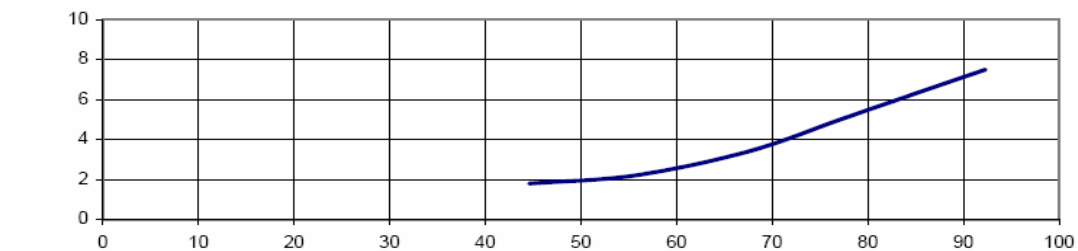
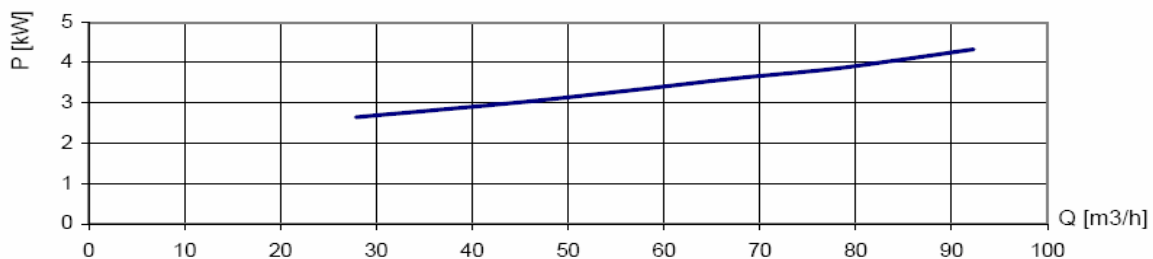
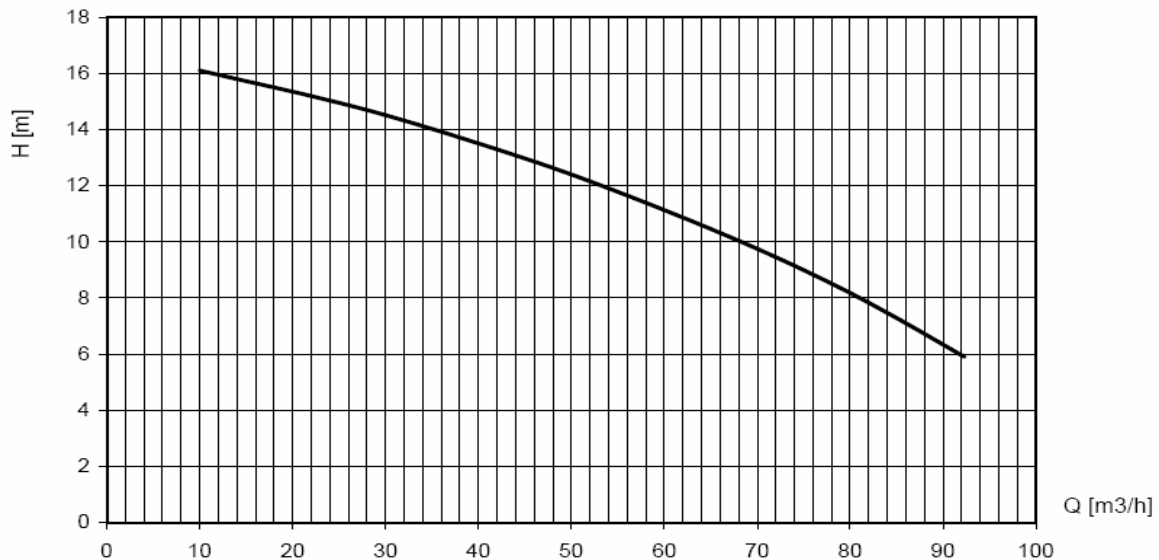
www.bbapumps.com
info@bbapumps.com

BBA self-priming centrifugal pumps

Type: **B 85 BVGMC**
3" cast iron monobloc



Pomptype / Pumpentyp / Pump type	: B85 G
Toerental / Drehzahl / Speed	: 1430 rpm
Waaier / Laufrad / Impeller	: "open" 219 mm
Slijtplaat / Verschleissplatte / Wear plate	:
Vrije doorlaat / Freier Durchgang / Free passage	: 40 mm
Zuig / Saug / Suction	: 3"
Pers / Druck / Discharge	: 3"



International standard ISO 9906 Grafiek / Kennlinie / Curve: **2003054**

BBA Pumps BV
Edisonstraat 12, 7006 RD
P.O. Box 498, 7000 AL
Doetinchem

Pumps for results
Tel. (+31) 314 36 84 36
Fax. (+31) 314 37 84 03

www.bbapumps.com
info@bbapumps.com

