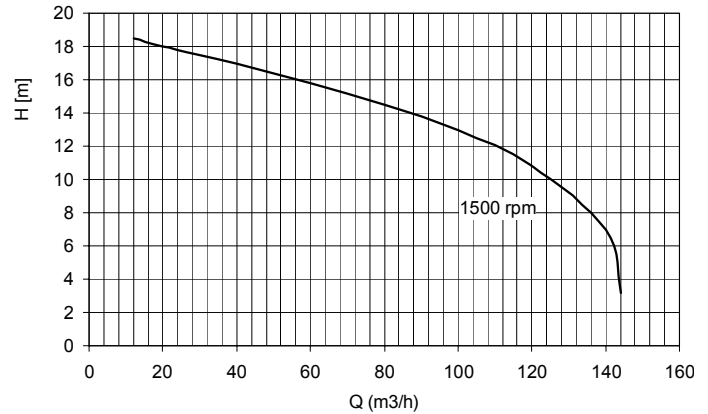


# BBA self priming centrifugal pumps



Type: **B 100 SHA**

4" diesel driven base frame mounted



## General:

The BBA self priming centrifugal pump B 100 (4") is a robust compact contractor pump for handling clean or polluted liquids with flow capacity up to 144 m<sup>3</sup>/h, total head up to 19 m and solid handling of 46 mm.

The construction with open impeller, changeable wear plate and large cleaning covers enables to pump clean or polluted liquids. The mechanical seal is grease lubricated and guarantees a good performance of the pump. This pump can run dry for certain period and needs no food valve for priming up.

The diesel driven B pump on a trailer is suitable for site work application. Built together with a diesel engine the noise level will be 77 dBa at 10m.

## Applications:

This pump system is used for: marine, industry, irrigation, waste water, agriculture and horticulture

## Technical specifications:

### Centrifugal pump:

impeller type	: open impeller
flow max	: 144 m <sup>3</sup> /h
head max	: 19 m
impeller size	: 254 mm
free passage	: 46 mm
req. power	: 7,5 kW
pump speed	: 1500 rpm
max speed	: 1500 rpm
connections	: 4" BSP

### Materials:

pump casing	: cast iron GG 20 – 0.6020
impeller	: cast iron GG 20 – 0.6020
wear plate	: cast iron GG 20 – 0.6020
impeller	: cast iron GG 40 – 0.6040
pump shaft	: steel C45 - DIN 1.1191
gaskets	: NBR
fixing material	: steel 8.8 el. galvanized

shaft seal	: mechanical seal
seal faces	: T.C. / T.C.
O ring	: Viton

# BBA self priming centrifugal pumps



Type: **B 100 SHA**

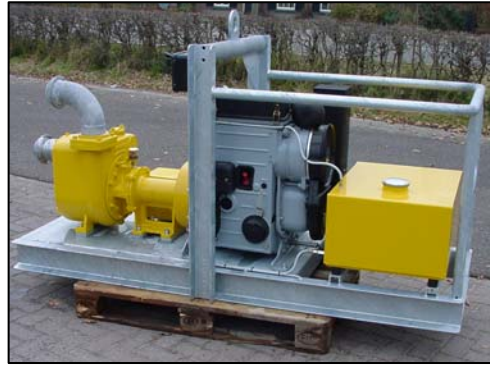
4" diesel driven base frame mounted

## Diesel drive:

diesel motor : Hatz 2m41  
cooling : air cooled  
cylinder : 2 cylinder  
motor power : 14,8 kW at 1500 rpm  
start : electric start, 12 V  
fuel consumption : max 2,0 l/h  
fuel tank : 100 liter (50 running hrs)  
assembly : pump unit mounted  
on a galvanized base  
frame  
noise level : 77 dBa at 10 m

## Dimensions:

l x w x h : 1700 x 800 x 1270 mm  
weight : 650 kg



## Optional:

300 liter tank frame

in a silenced canopy



## How it works:



The rotation of the impeller draws the air present in the suction pipe into the pump casing. The air mixes with the liquid. Liquid and air are transported to the discharge side. The heavier liquid falls back and the air leaves the pump through the discharge outlet. When all the air has been removed from the suction pipe the pump draws the liquid. The built in non-return valve at the suction side prevents the pump casing from being siphoned empty when the pump stops. So immediate re-prime is always possible.

**BBA Pumps BV**  
Edisonstraat 12, 7006 RD  
P.O. Box 498, 7000 AL  
Doetinchem

**Pumps for results**  
Tel. (+31) 314 36 84 36  
Fax. (+31) 314 37 84 03

[www.bbapumps.com](http://www.bbapumps.com)  
[info@bbapumps.com](mailto:info@bbapumps.com)