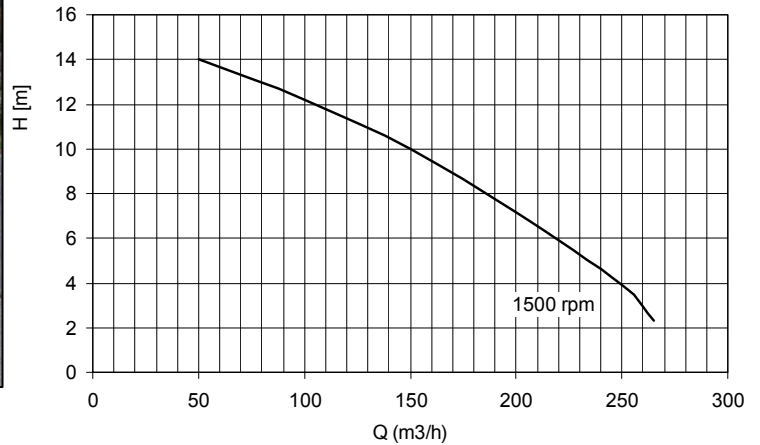


BBA self priming centrifugal pumps



Type: **B 156 SHA**

6" diesel driven base frame mounted



General:

The BBA self priming centrifugal pump B 156 (6") is a robust compact contractor pump for handling clean or polluted liquids with flow capacity up to 260 m³/h, total head up to 15 m and solid handling of 40 mm.

The construction with open impeller, changeable wear plate and large cleaning covers enables to pump clean or polluted liquids. The mechanical seal is grease lubricated and guarantees a good performance of the pump. This pump can run dry for certain period and needs no food valve for priming up.

The diesel driven B pump on a trailer is suitable for site work application. Built together with a diesel engine the noise level will be 77 dBa at 10m.

Applications:

This pump system is used for: marine, industry, irrigation, waste water, agriculture and horticulture

Technical specifications:

Centrifugal pump:

impeller type	: open impeller
flow max	: 260 m ³ /h
head max	: 15 m
impeller size	: 254 mm
free passage	: 40 mm
req. power	: 11,0 kW
pump speed	: 1500 rpm
max speed	: 1500 rpm
connections	: 6" BSP

Materials:

pump casing	: steel st37	- 1.0036
impeller	: cast iron GG 20	- 0.6020
wear plate	: steel st37	- 1.0036
impeller	: cast iron GG 40	- 0.6040
pump shaft	: steel C45 - DIN 1.1191	
gaskets	: NBR	
fixing material	: steel 8.8 el. galvanized	

shaft seal	: mechanical seal
seal faces	: T.C. / T.C.
O ring	: Viton

BBA self priming centrifugal pumps



Type: B 156 SHA

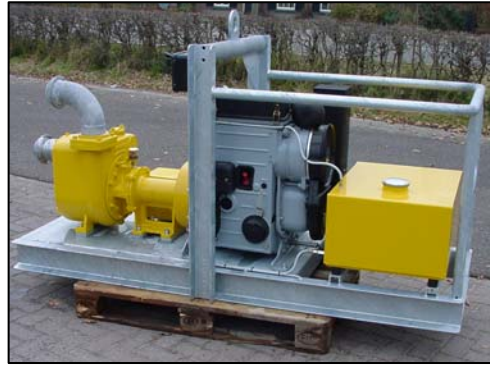
6" diesel driven base frame mounted

Diesel drive:

diesel motor : Hatz 2M41
cooling : air cooled
cylinder : 2 cylinder
motor power : 14,8 kW at 1500 rpm
start : electric start, 12 V
fuel consumption : max 3,0 l/h
fuel tank : 100 liter (30 running hrs)
assembly : pump unit mounted
on a galvanized base
frame
noise level : 77 dBa at 10 m

Dimensions:

l x w x h : 2300 x 800 x 1270 mm
weight : 780 kg



Optional:

300 liter tank frame

in a silenced canopy



How it works:



The rotation of the impeller draws the air present in the suction pipe into the pump casing. The air mixes with the liquid. Liquid and air are transported to the discharge side. The heavier liquid falls back and the air leaves the pump through the discharge outlet. When all the air has been removed from the suction pipe the pump draws the liquid. The built in non-return valve at the suction side prevents the pump casing from being siphoned empty when the pump stops. So immediate re-prime is always possible.

BBA Pumps BV
Edisonstraat 12, 7006 RD
P.O. Box 498, 7000 AL
Doetinchem

Pumps for results
Tel. (+31) 314 36 84 36
Fax. (+31) 314 37 84 03

www.bbapumps.com
info@bbapumps.com