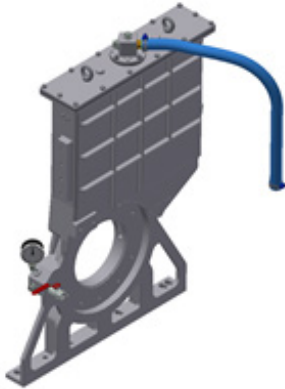
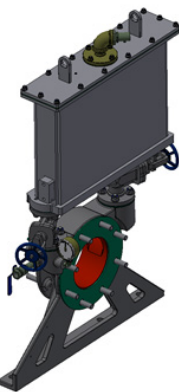


## Float box modification instructions for flooded suction pump installation



**Standard float box**  
Art.nr: 4301000600

Up to 0,2 bar – 2.9 psi.



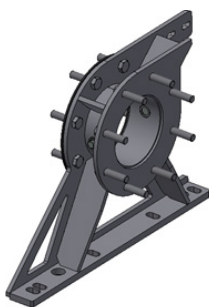
**Float box with taps**  
Art.nr: 70332590

BBA pump with K impeller.

- maximal 1,4 bar – 20 psi.

BA pump with E, KS and H impeller.

- maximal 3,5 bar – 50 psi.



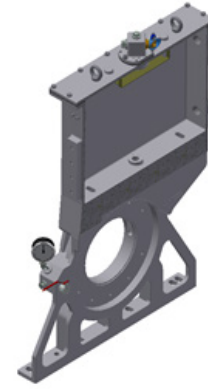
**Flange adopter**  
Art.nr: 18248

BA pump with K impeller.

- maximal 1,4 bar – 20 psi.

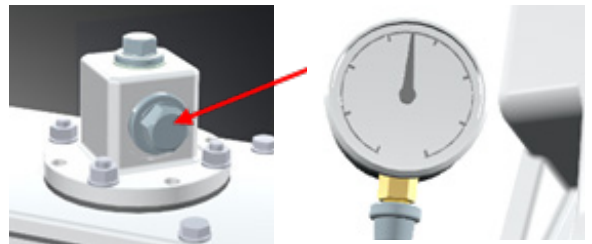
BA pump with E, KS and H impeller.

- maximal 3,5 bar – 50 psi.



**Standard float box**  
Art.nr: 4301000600

- Remove the float from the floatbox.
- Fit a sealing plug (G3/4 inch BSP thread) where the hose for the vacuum pump is normally connected.
- Remove the standard vacuum gauge from the float box.
- Fit a gauge (G1/4 inch BSP thread) that is suitable for vacuum and pressure.



BA pump with K impeller

- maximal 1,4 bar – 20 psi.

BA pump with E, KS, and H impeller

- maximal 3,5 bar – 50 psi.

